









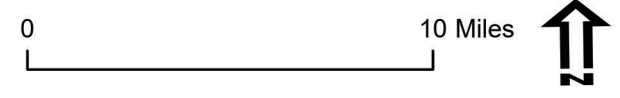



### Legend

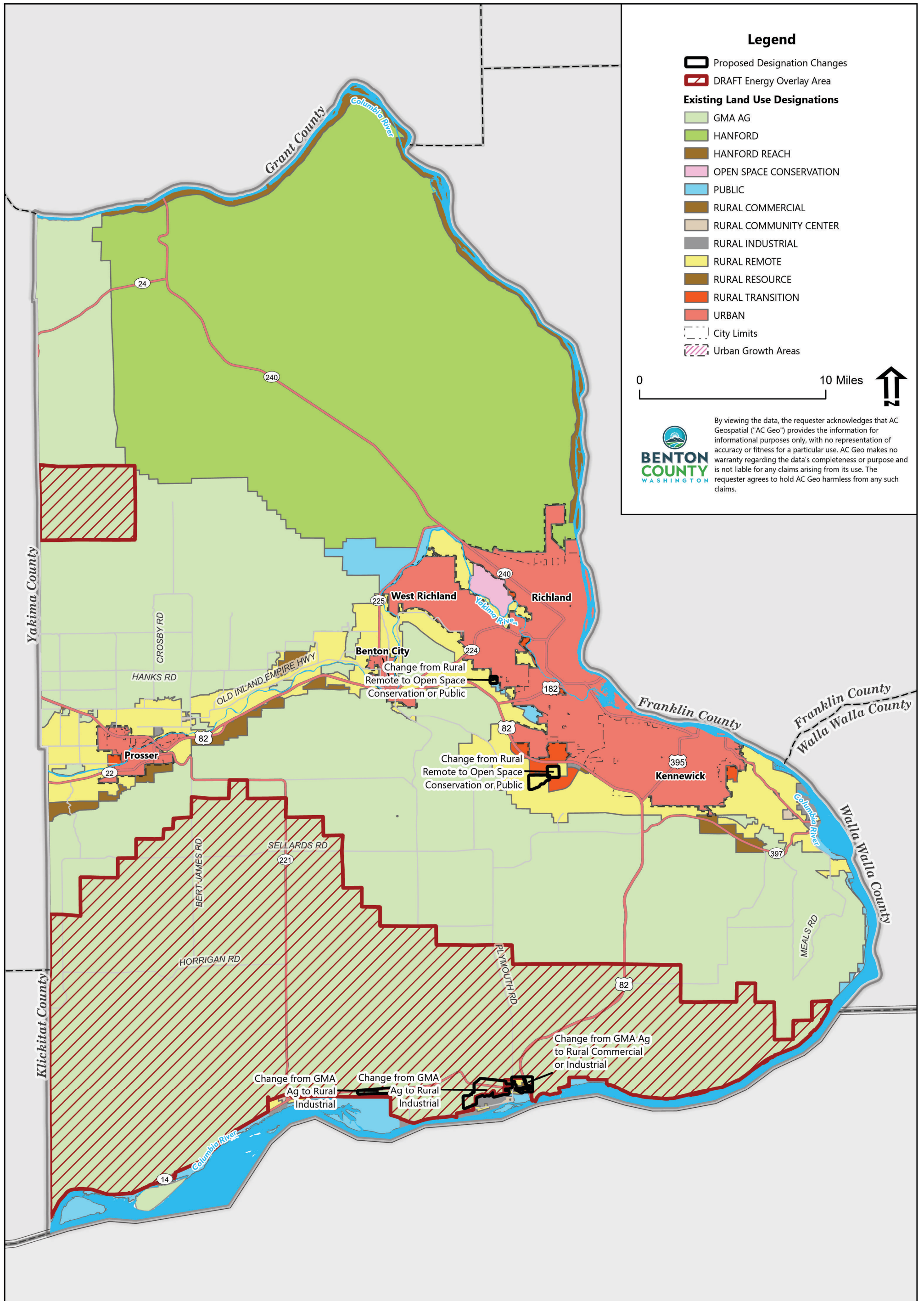
-  City Limits
-  Urban Growth Areas
-  Hanford Site Boundary
-  Counties
-  US/State Highway
-  Major County Road
-  Railroad
-  Waterbodies
-  Streams
-  Minor Drainages



 This GIS data is deemed reliable but is provided "as is" without any warranty regarding accuracy, timeliness, reliability, or completeness. These maps are not intended to represent a legal survey of the land and are for graphical purposes only.

Data Sources: USDA SSURGO, FEMA, Benton County GIS, Washington DNR, Esri, NASA, NGA, USGS, Sources: Esri, TomTom, Garmin, FAO, NOAA, USGS, © OpenStreetMap contributors, and the GIS User Community, WSDOT, Sources: Esri; U.S. Department of  
 Date of Last Export: 6/13/2025 8:56 AM

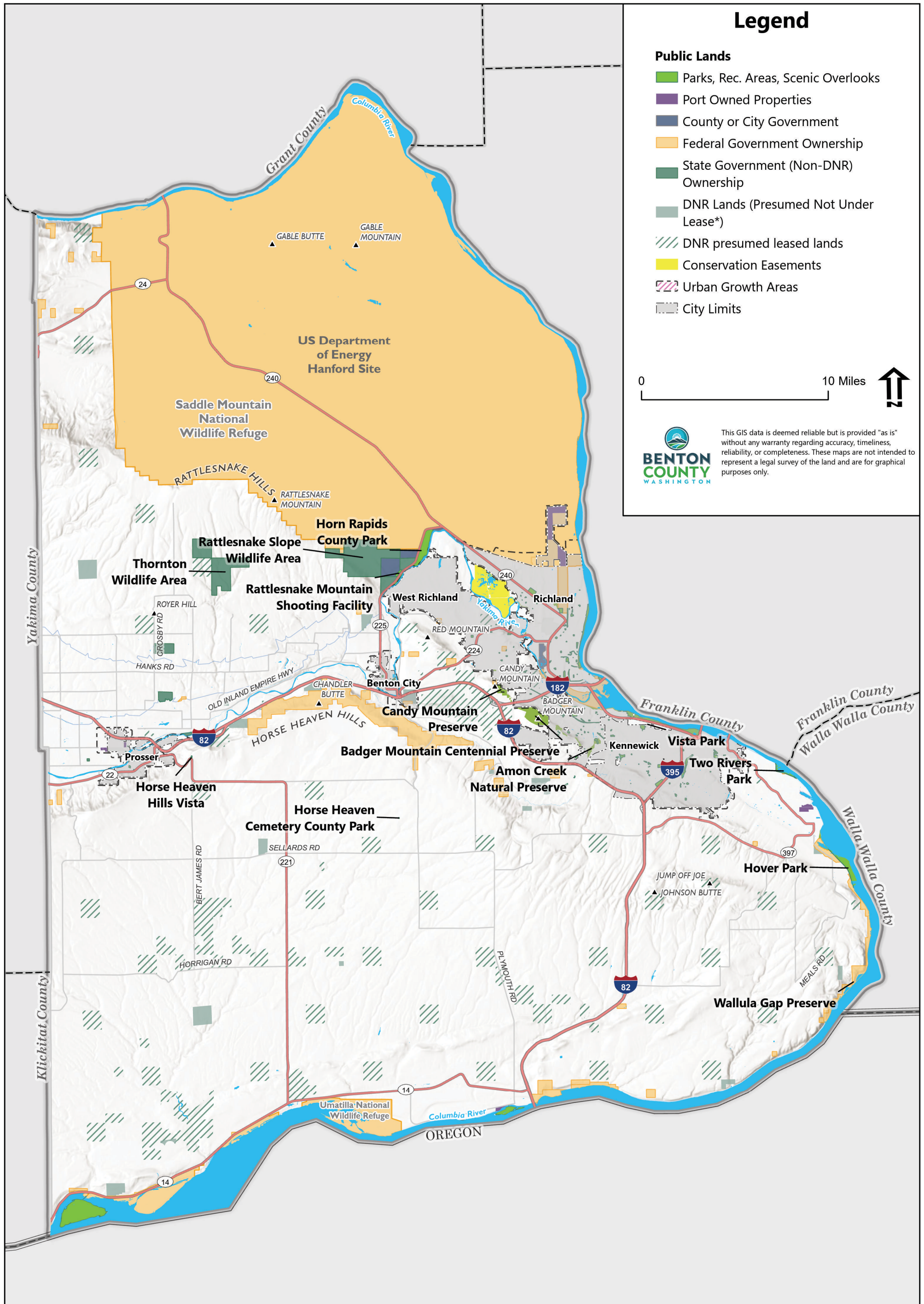
**Figure XX**  
**DRAFT General Overview Map**  
 Benton County Comprehensive Plan



Data Sources: Benton County GIS,  
 Washington Department of Transportation,  
 Washington DNR, Esri, NASA, NGA, USGS

Date of Last Export: 6/11/2025 4:55 PM

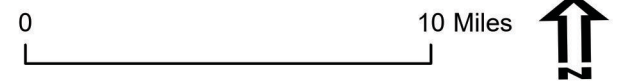
**Figure XX**  
**DRAFT Land Future Land Use Map**  
 Benton County Comprehensive Plan



### Legend

**Public Lands**

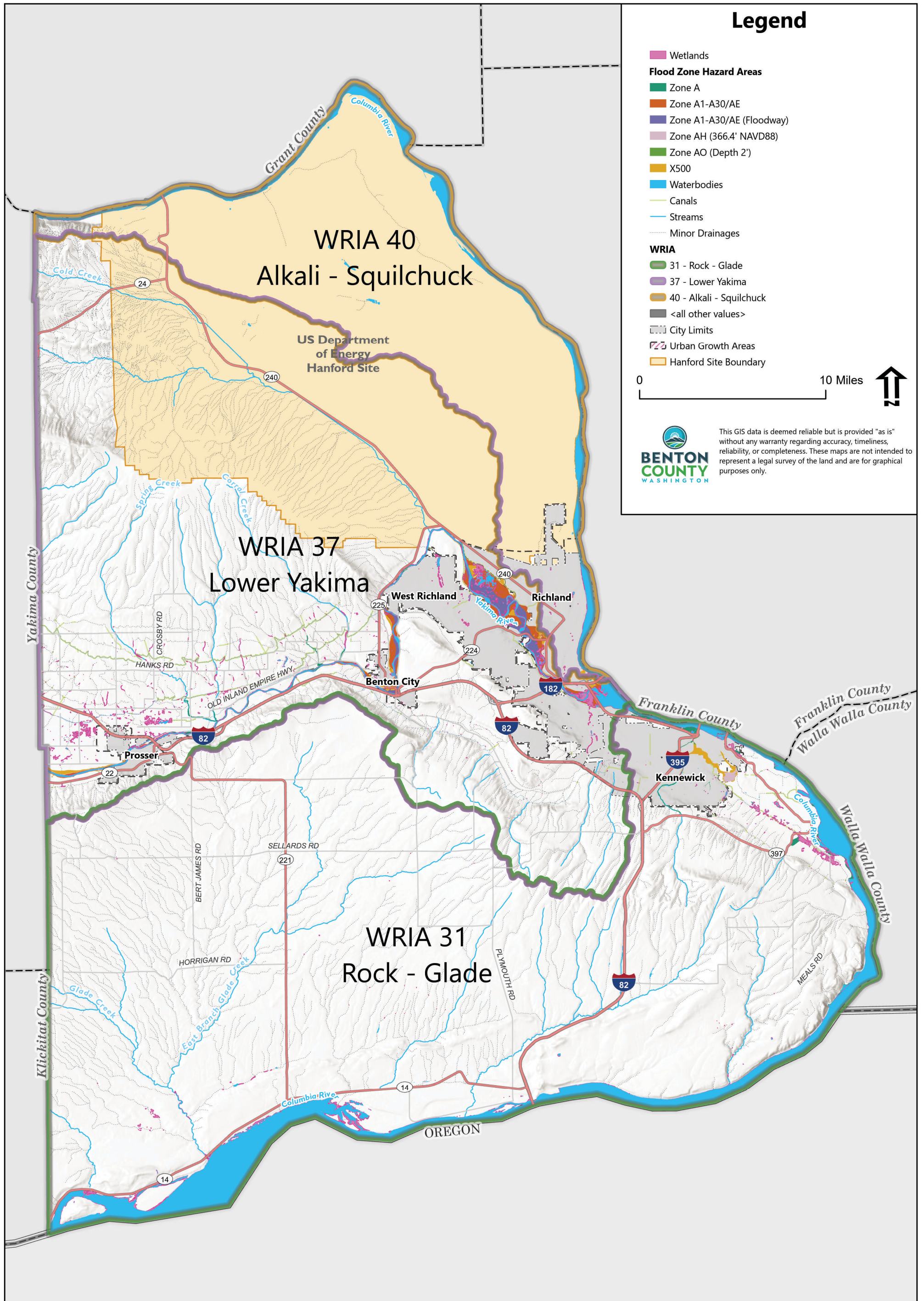
- Parks, Rec. Areas, Scenic Overlooks
- Port Owned Properties
- County or City Government
- Federal Government Ownership
- State Government (Non-DNR) Ownership
- DNR Lands (Presumed Not Under Lease\*)
- DNR presumed leased lands
- Conservation Easements
- Urban Growth Areas
- City Limits



This GIS data is deemed reliable but is provided "as is" without any warranty regarding accuracy, timeliness, reliability, or completeness. These maps are not intended to represent a legal survey of the land and are for graphical purposes only.

Data Sources: USDA SSURGO, FEMA, Benton County GIS, Washington DNR, Esri, NASA, NGA, USGS, Sources: Esri, TomTom, Garmin, FAO, NOAA, USGS, © OpenStreetMap contributors, and the GIS User Community  
 Date of Last Export: 6/13/2025 7:54 AM

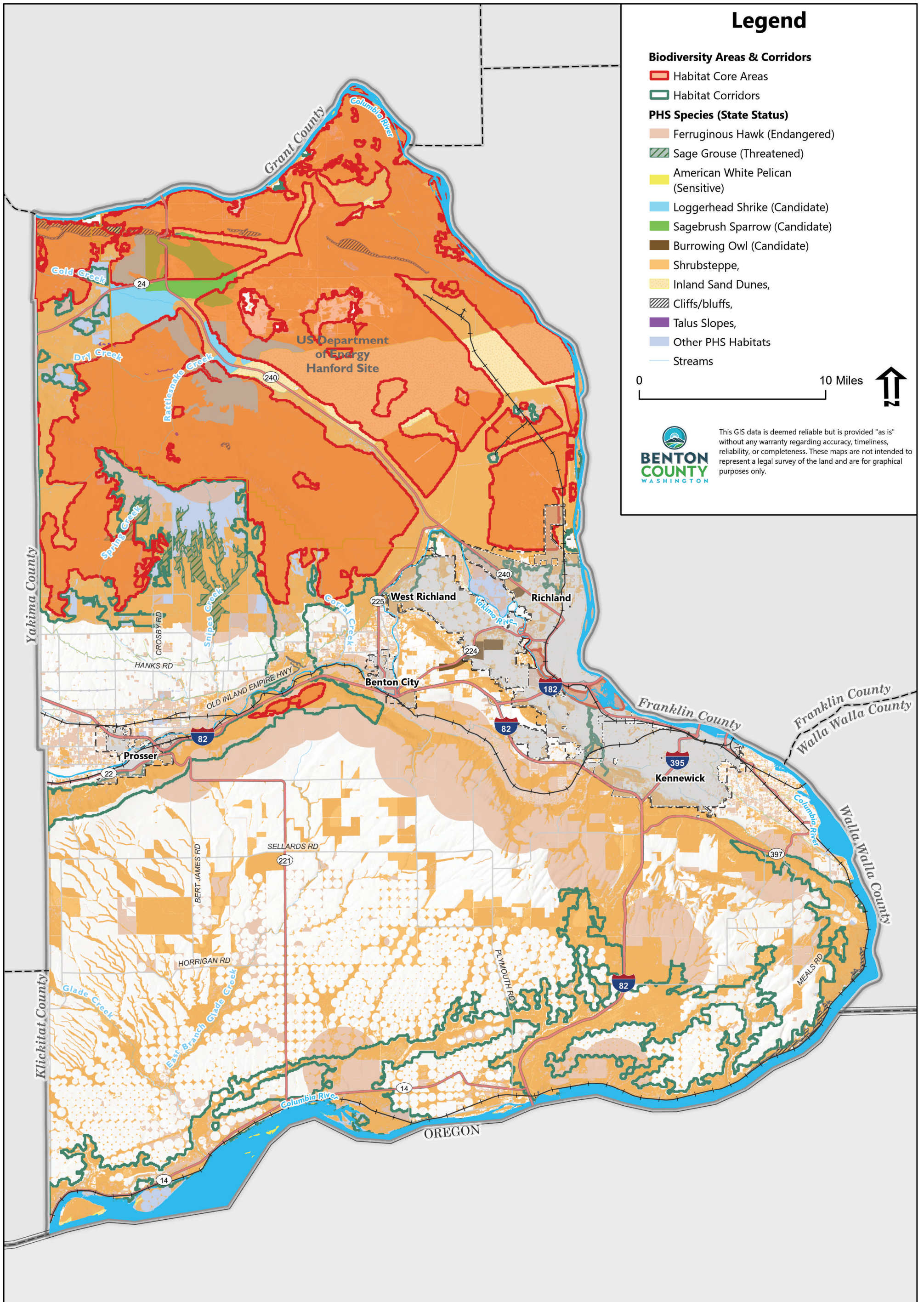
**Figure XX**  
**DRAFT Public Land and Parks Map**  
 Benton County Comprehensive Plan



Data Sources: US Fish and Wildlife Service NWI, Benton County GIS, Washington DNR, Esri, NASA, NGA, USGS, Sources: Esri, TomTom, Garmin, FAO, NOAA, USGS, © OpenStreetMap contributors, and the GIS User Community

Date of Last Export: 6/13/2025 7:29 AM

**Figure XX**  
**DRAFT Waterbodies, Streams, Floodplains, and Wetlands Map**  
Benton County Comprehensive Plan



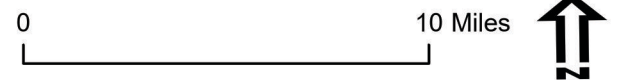
# Legend

## Biodiversity Areas & Corridors

- ▬ Habitat Core Areas
- ▬ Habitat Corridors

## PHS Species (State Status)

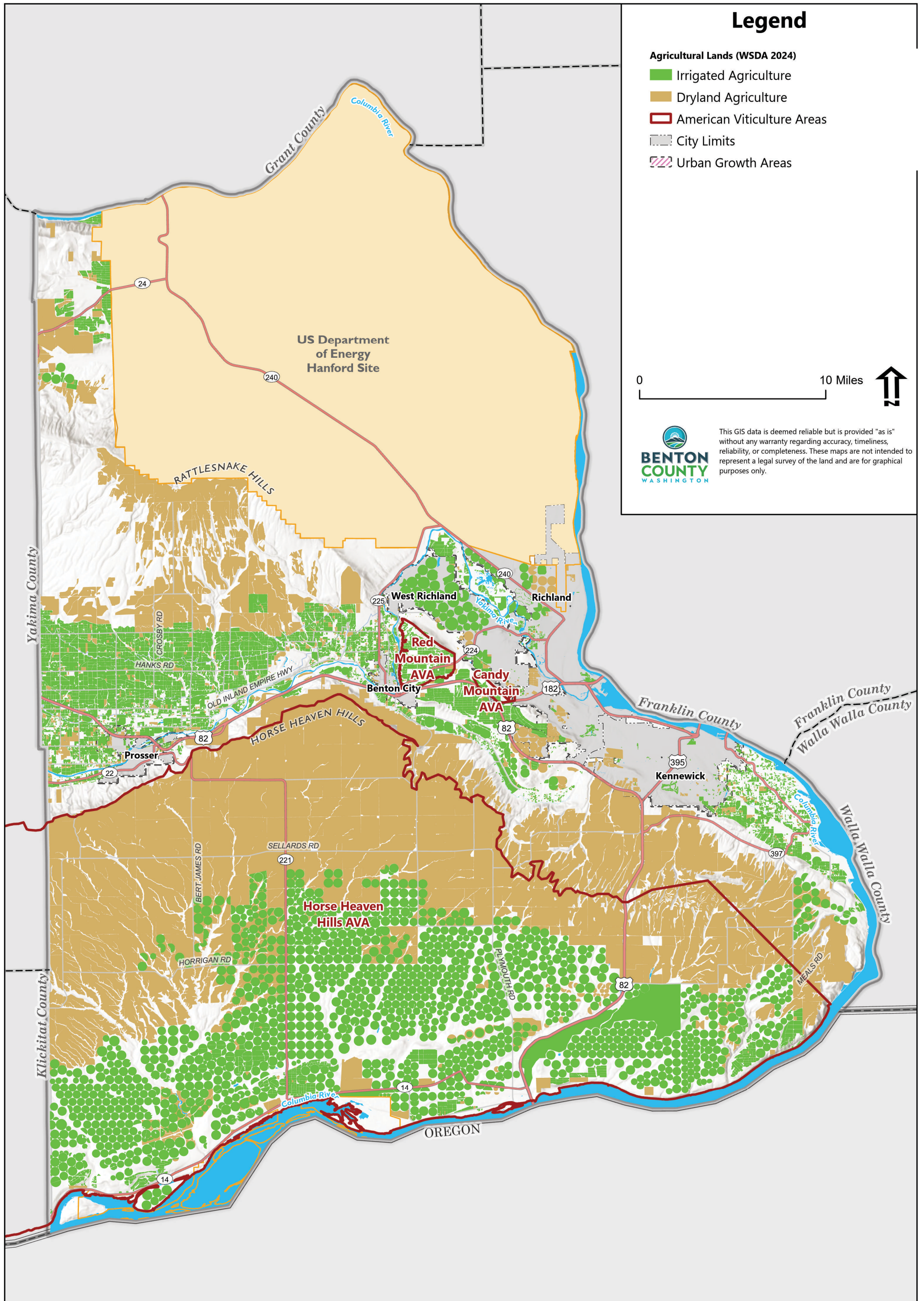
- Ferruginous Hawk (Endangered)
- Sage Grouse (Threatened)
- American White Pelican (Sensitive)
- Loggerhead Shrike (Candidate)
- Sagebrush Sparrow (Candidate)
- Burrowing Owl (Candidate)
- Shrubsteppe,
- Inland Sand Dunes,
- Cliffs/bluffs,
- Talus Slopes,
- Other PHS Habitats
- ▬ Streams



This GIS data is deemed reliable but is provided "as is" without any warranty regarding accuracy, timeliness, reliability, or completeness. These maps are not intended to represent a legal survey of the land and are for graphical purposes only.

Data Sources: WDFW, Benton County GIS, Washington DNR, Esri, NASA, NGA, USGS, Sources: Esri, TomTom, Garmin, FAO, NOAA, USGS, © OpenStreetMap contributors, and the GIS User Community, WSDOT  
 Date of Last Export: 6/12/2025 4:29 PM

**Figure XX**  
**DRAFT Fish & Wildlife Habitat Conservation Areas Map**  
 Benton County Comprehensive Plan



### Legend

**Agricultural Lands (WSDA 2024)**

- Irrigated Agriculture
- Dryland Agriculture
- American Viticulture Areas
- City Limits
- Urban Growth Areas

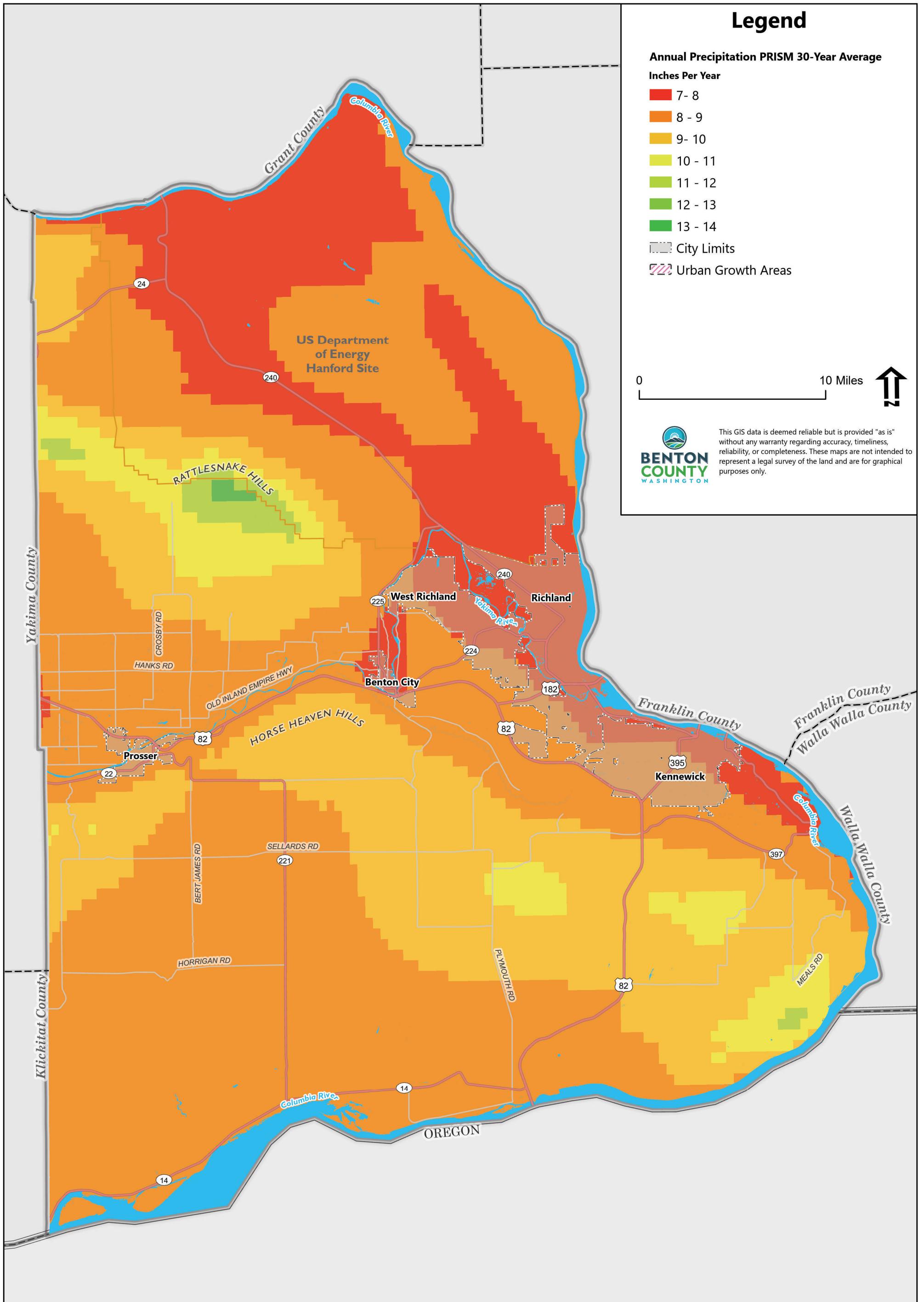
0 10 Miles



This GIS data is deemed reliable but is provided "as is" without any warranty regarding accuracy, timeliness, reliability, or completeness. These maps are not intended to represent a legal survey of the land and are for graphical purposes only.

Data Sources: USDA SSURGO, FEMA, Benton County GIS, Washington DNR, Esri, NASA, NGA, USGS, Sources: Esri, TomTom, Garmin, FAO, NOAA, USGS, © OpenStreetMap contributors, and the GIS User Community, BLM Admin State  
 Date of Last Export: 6/13/2025 7:29 AM

**Figure XX**  
**DRAFT Agricultural Land Use Map**  
 Benton County Comprehensive Plan



### Legend

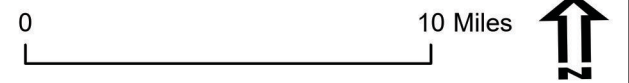
**Annual Precipitation PRISM 30-Year Average**

Inches Per Year

- 7- 8
- 8 - 9
- 9- 10
- 10 - 11
- 11 - 12
- 12 - 13
- 13 - 14

City Limits

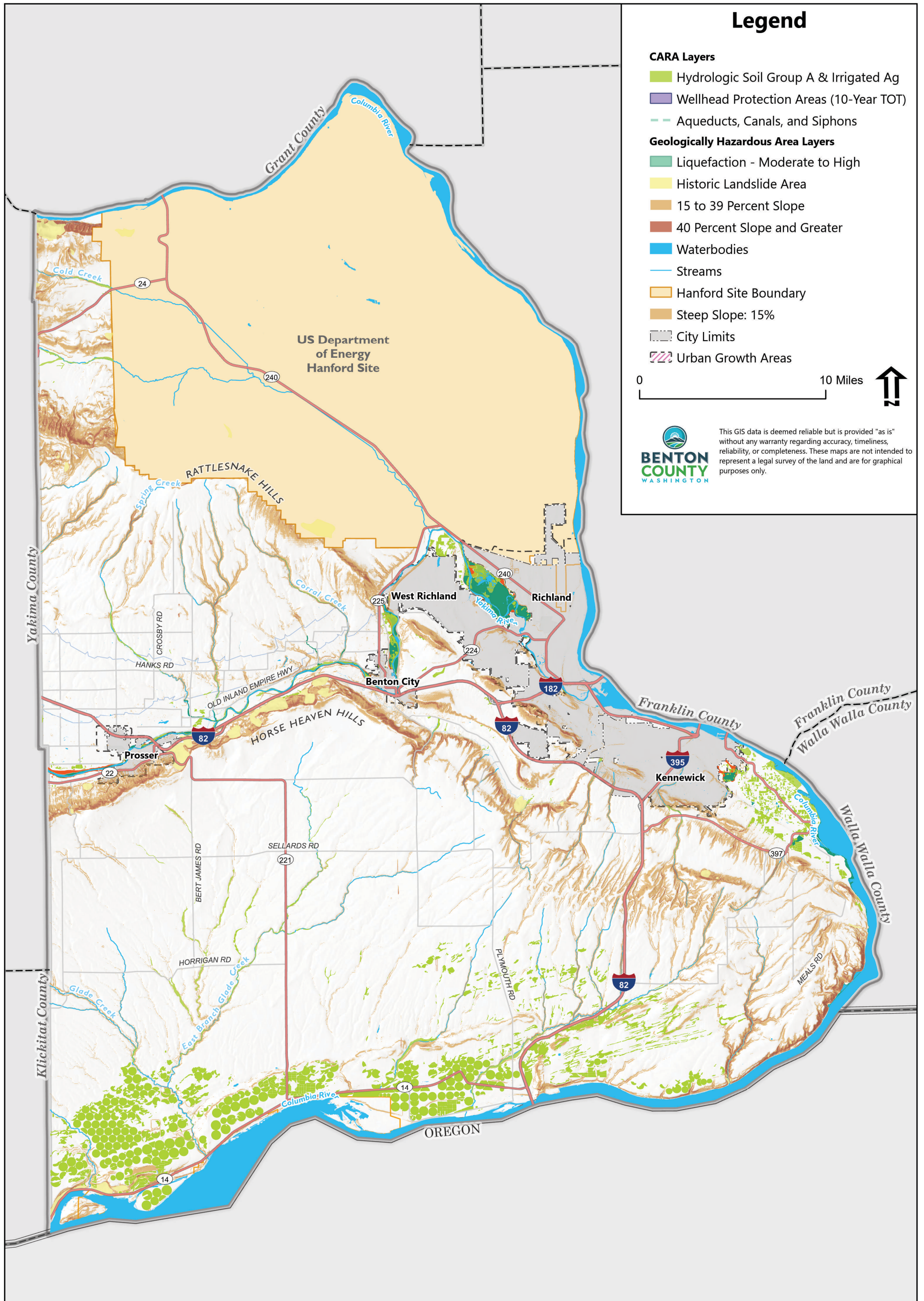
Urban Growth Areas



This GIS data is deemed reliable but is provided "as is" without any warranty regarding accuracy, timeliness, reliability, or completeness. These maps are not intended to represent a legal survey of the land and are for graphical purposes only.

Data Sources: USDA SSURGO, FEMA, Benton County GIS, Washington DNR, Esri, NASA, NGA, USGS, Sources: Esri, TomTom, Garmin, FAO, NOAA, USGS, © OpenStreetMap contributors, and the GIS User Community  
 Date of Last Export: 6/13/2025 8:00 AM

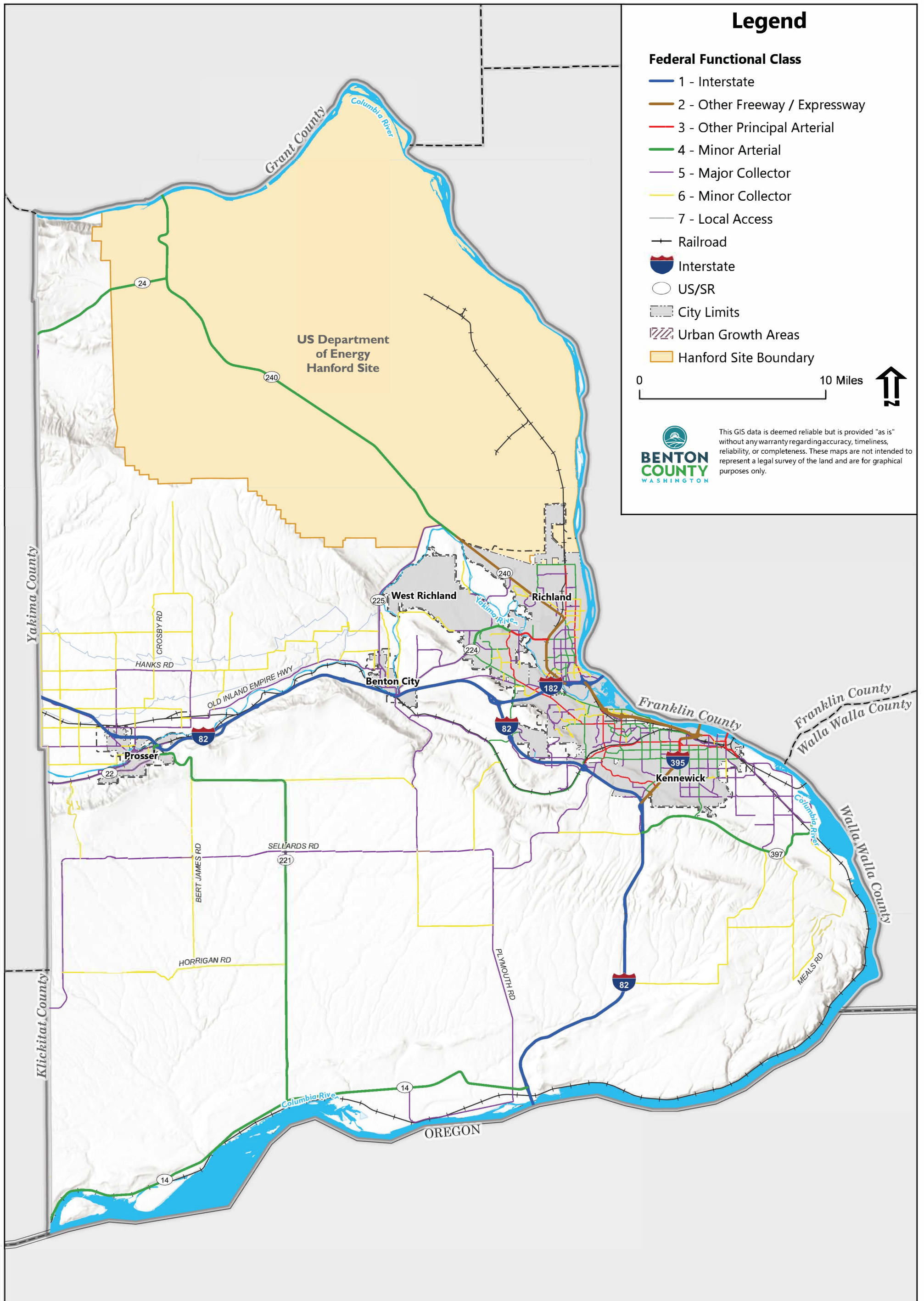
**Figure XX**  
**DRAFT Average Annual Precipitation Map**  
 Benton County Comprehensive Plan



Data Sources: USDA SSURGO, FEMA, Benton County GIS, Washington DNR, Esri, NASA, NGA, USGS, Sources: Esri, TomTom, Garmin, FAO, NOAA, USGS, © OpenStreetMap contributors, and the GIS User Community

Date of Last Export: 6/13/2025 7:57 AM

**Figure XX**  
**DRAFT CARA and Geologic Hazard Map**  
 Benton County Comprehensive Plan



# Legend

## Federal Functional Class

- 1 - Interstate
- 2 - Other Freeway / Expressway
- 3 - Other Principal Arterial
- 4 - Minor Arterial
- 5 - Major Collector
- 6 - Minor Collector
- 7 - Local Access

— Railroad

Interstate

US/SR

City Limits

Urban Growth Areas

Hanford Site Boundary

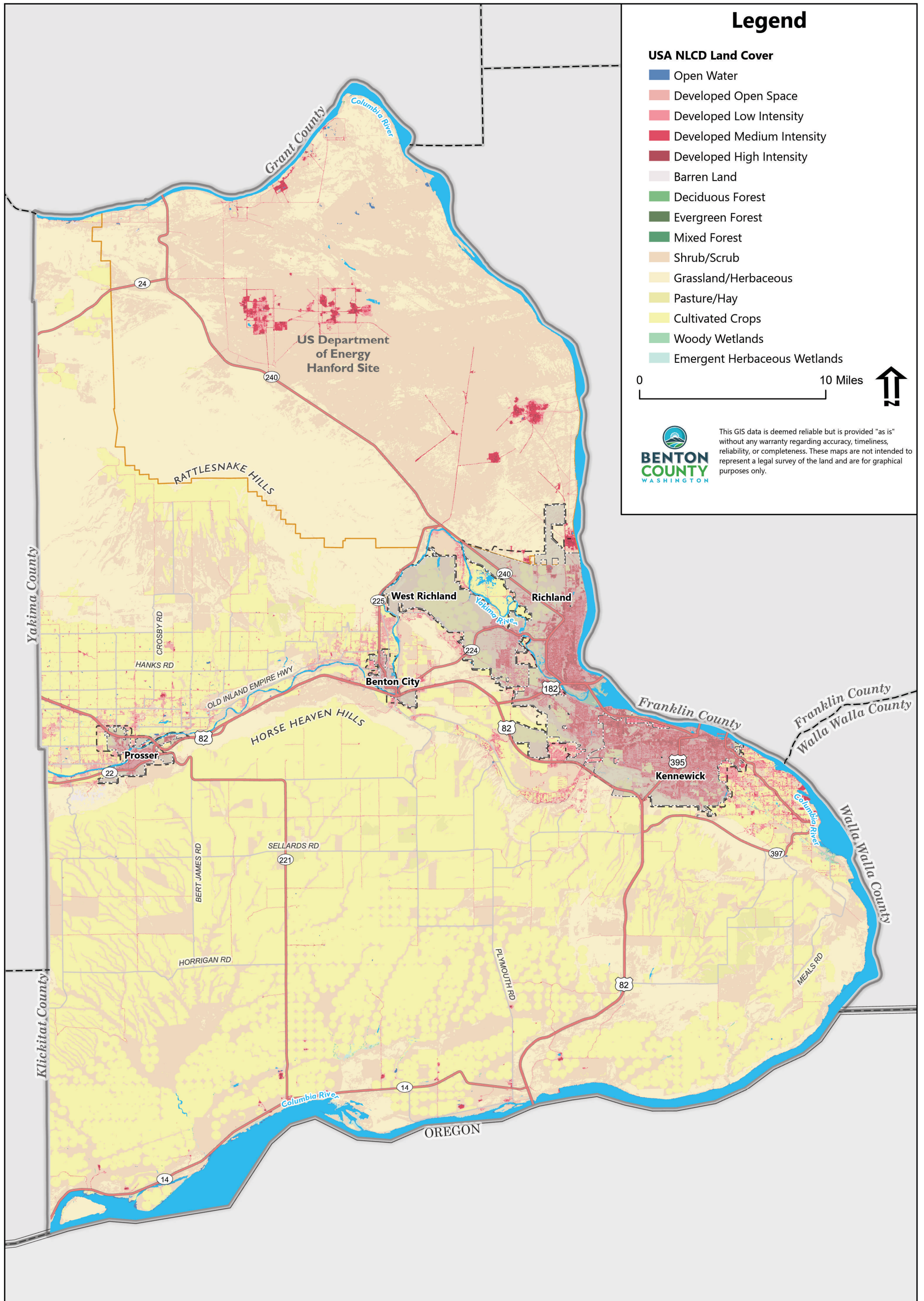
0 10 Miles



This GIS data is deemed reliable but is provided "as is" without any warranty regarding accuracy, timeliness, reliability, or completeness. These maps are not intended to represent a legal survey of the land and are for graphical purposes only.

Data Sources: Benton County GIS,  
 Washington DNR, Esri, NASA, NGA, USGS,  
 Sources: Esri, TomTom, Garmin, FAO, NOAA,  
 USGS, © OpenStreetMap contributors, and  
 Date of Last Export: 6/12/2025 2:42 PM

**Figure XX**  
**DRAFT Existing Transportation Facilities Map**  
 Benton County Comprehensive Plan



### Legend

**USA NLCD Land Cover**

- Open Water
- Developed Open Space
- Developed Low Intensity
- Developed Medium Intensity
- Developed High Intensity
- Barren Land
- Deciduous Forest
- Evergreen Forest
- Mixed Forest
- Shrub/Scrub
- Grassland/Herbaceous
- Pasture/Hay
- Cultivated Crops
- Woody Wetlands
- Emergent Herbaceous Wetlands

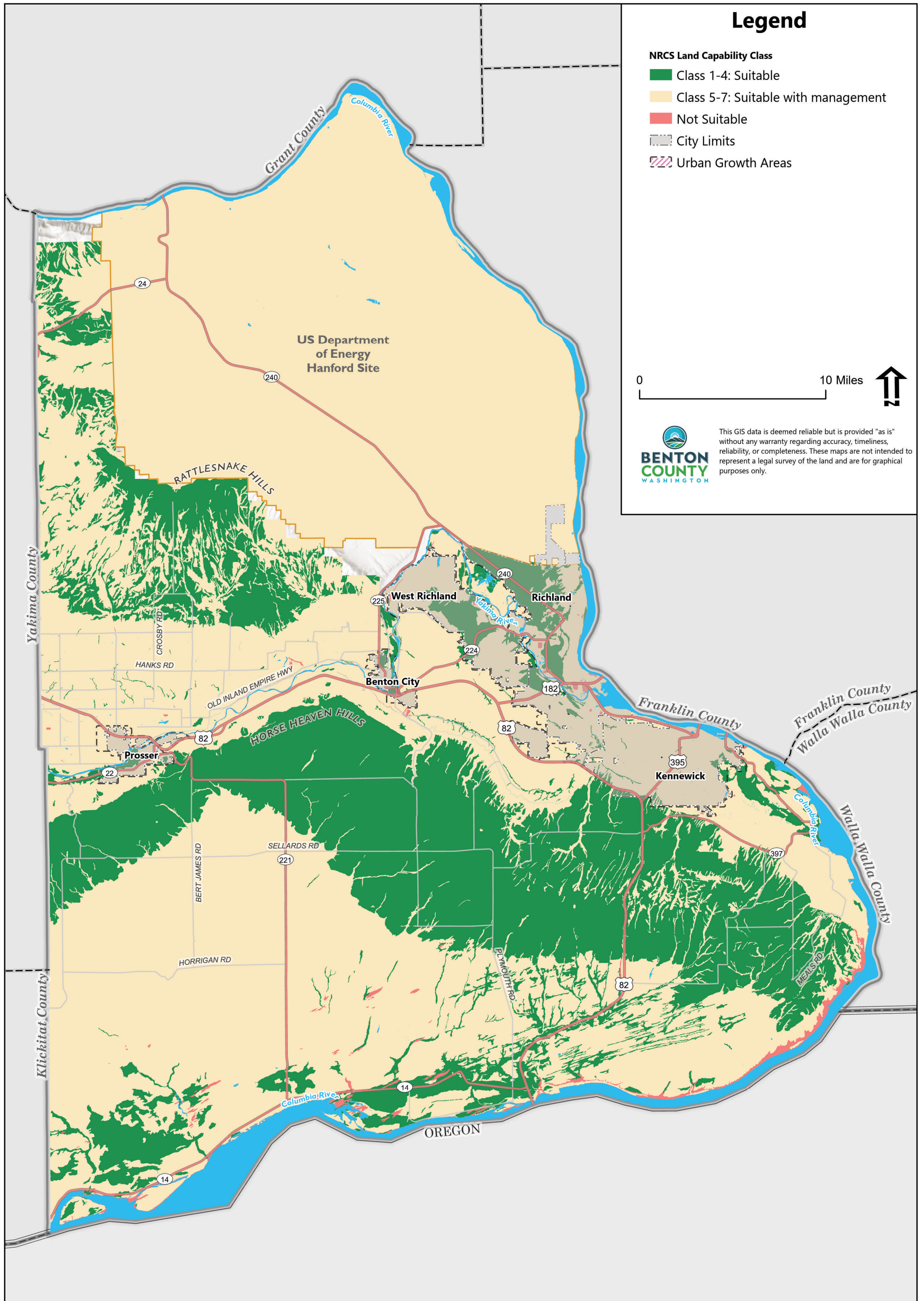
0 10 Miles



This GIS data is deemed reliable but is provided "as is" without any warranty regarding accuracy, timeliness, reliability, or completeness. These maps are not intended to represent a legal survey of the land and are for graphical purposes only.

Data Sources: USDA SSURGO, FEMA, Benton County GIS, Washington DNR, Esri, NASA, NGA, USGS, Sources: Esri, TomTom, Garmin, FAO, NOAA, USGS, © OpenStreetMap contributors, and the GIS User Community  
 Date of Last Export: 6/13/2025 7:32 AM

**Figure XX**  
**DRAFT General Land Cover Map**  
 Benton County Comprehensive Plan



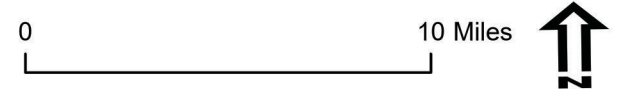
Data Sources: USDA SSURGO, FEMA, Benton County GIS, Washington DNR, Source: USDA NRCS, Esri, Esri, CGIAR, USGS, Sources: Esri, TomTom, Garmin, FAO, NOAA, USGS, © OpenStreetMap contributors, and the GIS User Community  
 Date of Last Export: 6/13/2025 8:04 AM

**Figure XX**  
**DRAFT Land Capability Classification Map**  
 Benton County Comprehensive Plan



### Legend

- USGS Fault Structures
- ✗ Mineral Resource Lands
- Sedimentary Rocks and Deposits**
- Q<sub>Tc</sub>, Quaternary–Tertiary continental sedimentary rocks and deposits
- T<sub>c</sub>, Tertiary continental sedimentary rocks
- Unconsolidated Sediments**
- Q<sub>d</sub>, Holocene dune sand
- Q<sub>a</sub>, Quaternary alluvium
- Q<sub>ls</sub>, Quaternary mass-wasting deposits
- Q<sub>l</sub>, Quaternary loess
- Q<sub>f</sub>, Pleistocene outburst-flood deposits
- Volcanic Rocks and Deposits**
- T<sub>v(cr)</sub>, Tertiary volcanic rocks, Columbia River Basalt Group



This GIS data is deemed reliable but is provided "as is" without any warranty regarding accuracy, timeliness, reliability, or completeness. These maps are not intended to represent a legal survey of the land and are for graphical purposes only.

Data Sources: USDA SSURGO, FEMA, Benton County GIS, Washington DNR, Washington Geological Survey, Esri, CGIAR, USGS, Sources: Esri, TomTom, Garmin, FAO, NOAA, USGS, © OpenStreetMap contributors, and the GIS User Community  
 Date of Last Export: 6/13/2025 7:30 AM

**Figure XX**  
**DRAFT Surface Geology & Mineral Resource Lands Map**  
 Benton County Comprehensive Plan